

Navaliber wet units are carefully designed to fulfill the technical, functional and stylistic requirements of the Shipyard and the Owner.

### Panels

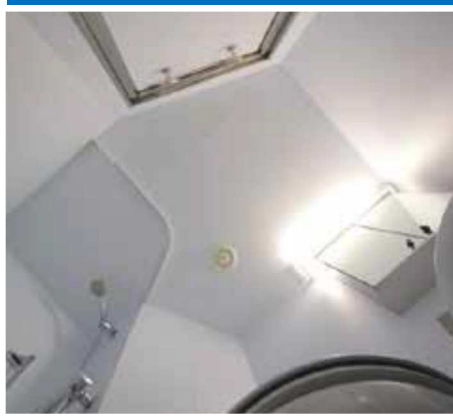
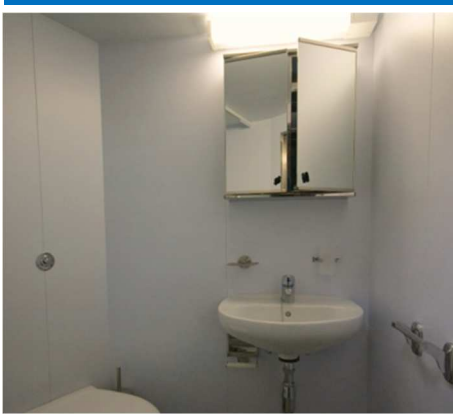
Panels are ISOLIBER 25B-15 reference, of B-15 fire classification and 25 mm thickness. The core panel is made of high-density rock wool of 150 kg/m<sup>3</sup>, lined on both sides by a 0,7 mm thick galvanized sheet. In the interior side of wet unit, panels are finished in decorative low flame spread PVC foil.

### Ceilings

Ceiling for the wet unit is Navaliber B-0 reference, with B-0 fire classification. The core panel of ceiling is made of high-density rock wool of 40 kg/m<sup>3</sup>, lined on one side by a 0,7 mm thick galvanized sheet and, in the visible side, coated with a low flame spread decorative PVC foil.

### Doors

Door for the wet unit is Navaliber 2NB-15 or C class door with high-density rock wool core of 150 kg/m<sup>3</sup>, reinforced with a frame of galvanized sheet of 1.2 and 3 mm thickness and covered with a PVC film in the decorative sides. Edge trim is in stainless steel. Doors are supplied with lock and all necessary accessories. Handle and hinges are in stainless steel and lock is GSV 3262.



### Flooring

The base of the wet unit is made of 3 mm steel sheet with primed anticorrosive exterior finish in non-slip resin basement made of epoxy.

### Piping

Wet units are supplied with cold / hot water internal connection for shower and toilet and with single grey water outlet for shower and toilet.

### Furniture and accessories

One mirror cabinet in stainless steel is supplied as standard delivery. Different styles of stainless steel and chromed accessories are available.



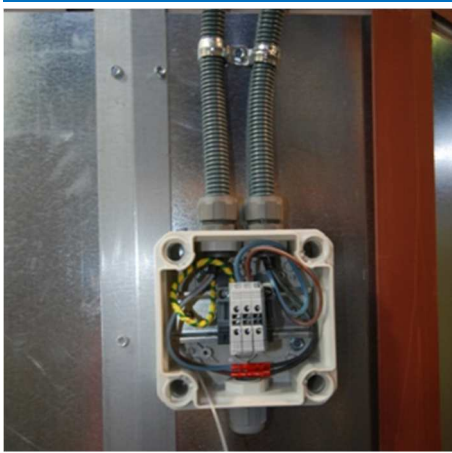
Vacuum type toilet to be delivered by the yard to Navaliber and fitted by Navaliber in our facilities.

Multilayer pipes are the standard ones but any kind of pipe is fitted under request.



### Electrical system

Wet units are supplied with finished electrical installations, including one mirror cabinet with light and socket.



### Options

From this standard configuration, wet units can be highly upgraded, producing totally tailor made units with all kind of finishing.

- Basis in stainless steel.
- Panels in aluminum or stainless steel with PVC cover.
- Gravity toilet with fresh or salt water flushes.
- Different materials for piping: stainless steel, cooper, PP, PB, PVC, PE, multilayer, etc.
- Electric radiant floor heating.
- Flat pack or full assembly modules.
- Curtain or shower panel.
- Different kinds of flooring and furniture.



### Forwarding and set-up

Wet units are supplied with plastic covering in order to protect units from outdoor weather damages and also mounted within cable system in order to elevate the wet unit with cranes into the vessel as decks are assembled.

