

The NAVALIBER 3NB-15 door is specially designed for high noise reduction (40 dB with louver and 43 dB without louver). At the same time is B-15 fire retarding classified.

The 3NB-15 door offers the following variations and optional features:

- Ventilation louver
- Kick-out panel
- Door closer

Dimensions, accessories and finishing according to project.

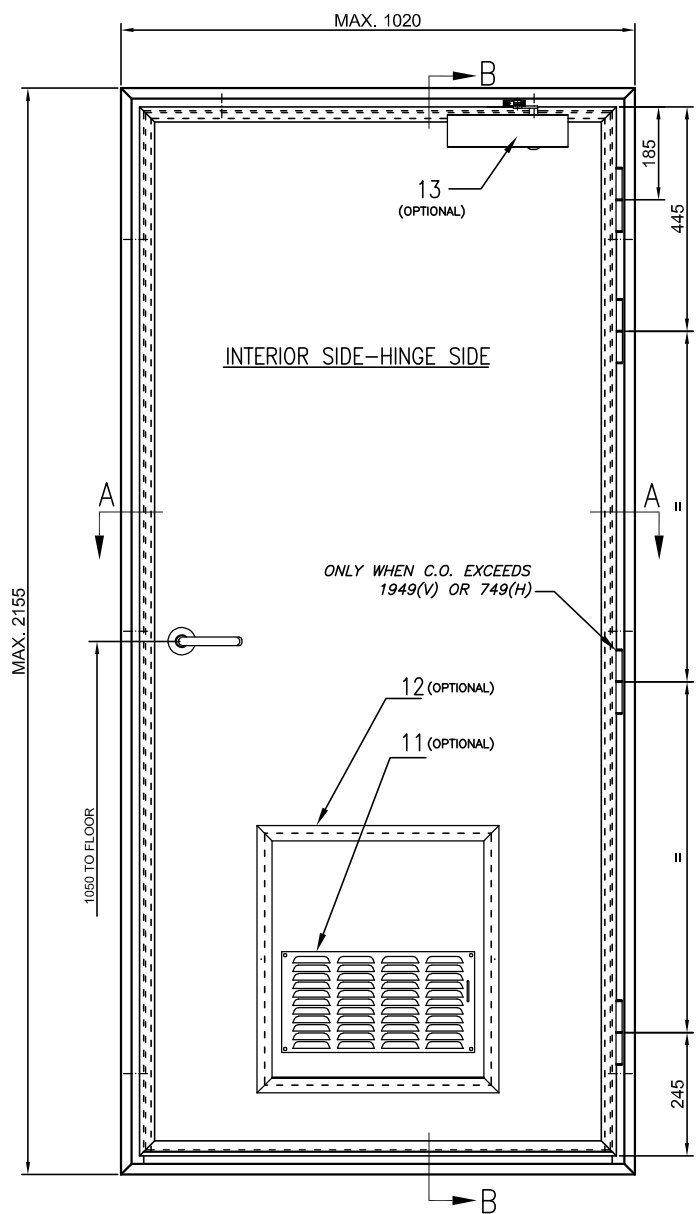
| TECHNICAL FEATURES | 3NB-15 |
|-------------------------------|--------------------------|
| Door frame | 1,2 mm |
| Door leaf frame | 1,5-3 mm |
| Linings | 1,2 mm |
| Finishing | 150 µm PVC film |
| Insulation | rock wool |
| Density | 70-180 kg/m ³ |
| Max. vertical clear opening | 2050 mm |
| Max. horizontal clear opening | 900 mm |

| OTHER FEATURES | 3NB-15 (with louver) | 3NB-15 (without louver) |
|-----------------|-------------------------|----------------------------|
| Thickness | 50 mm | 50 mm |
| Noise reduction | 40 dB ⁽¹⁾ | 43 dB ⁽²⁾ |
| Weight | 38 kg/m ² | 40 kg/m ² |
| Classification | B-15 | B-15 |

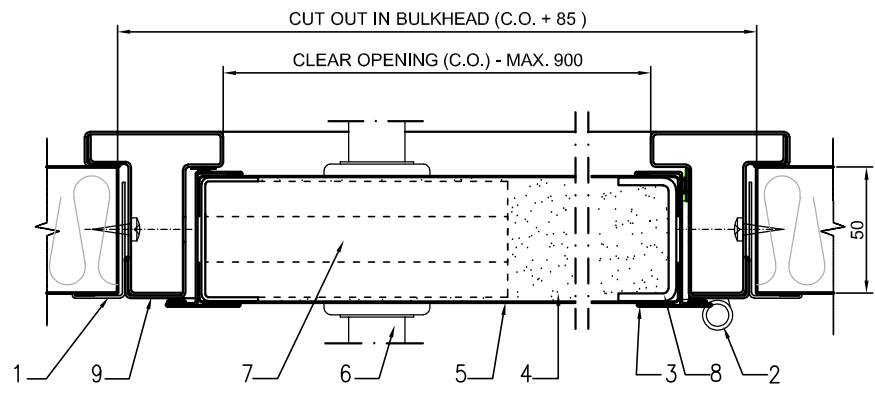


¹ According to acoustic test ref. CTA 289/09/AER-2 and method of test UNE-EN ISO 140-3:1995.

² According to acoustic test ref. CTA 367/08/AER and method of test UNE EN ISO 140-3:1995.

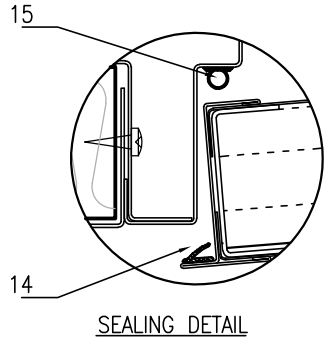
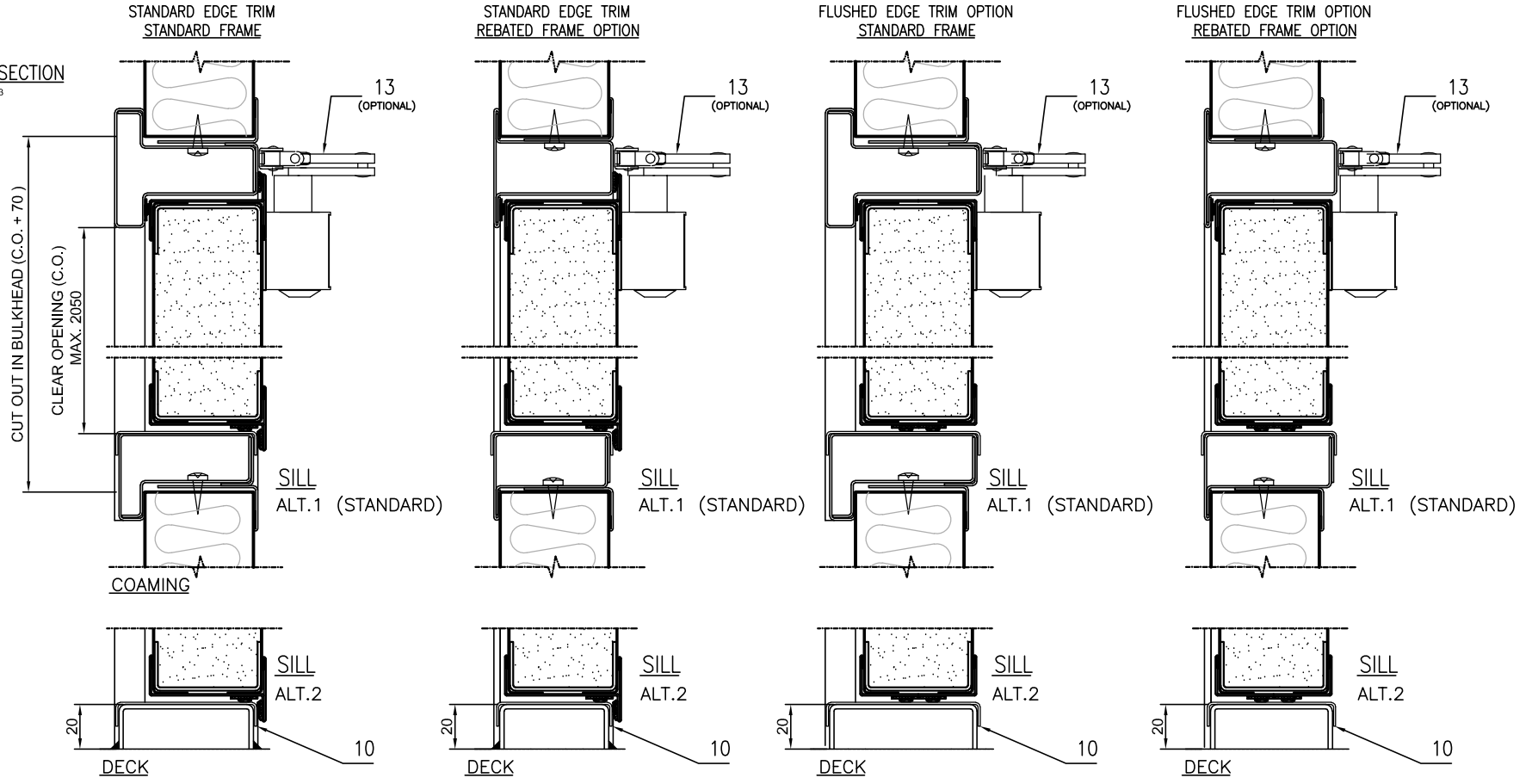


A-A SECTION
SCALE 1:2



SEE FRAME AND EDGE TRIM OPTIONS
IN B-B SECTION

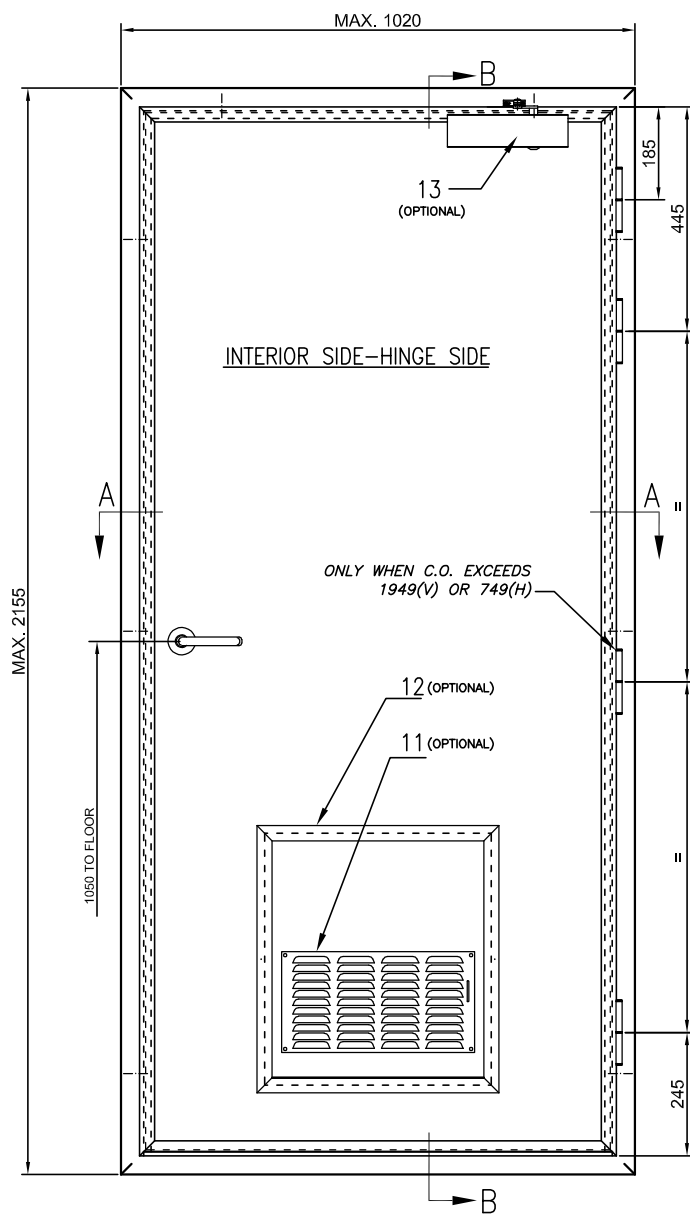
B-B SECTION
SCALE 1:3



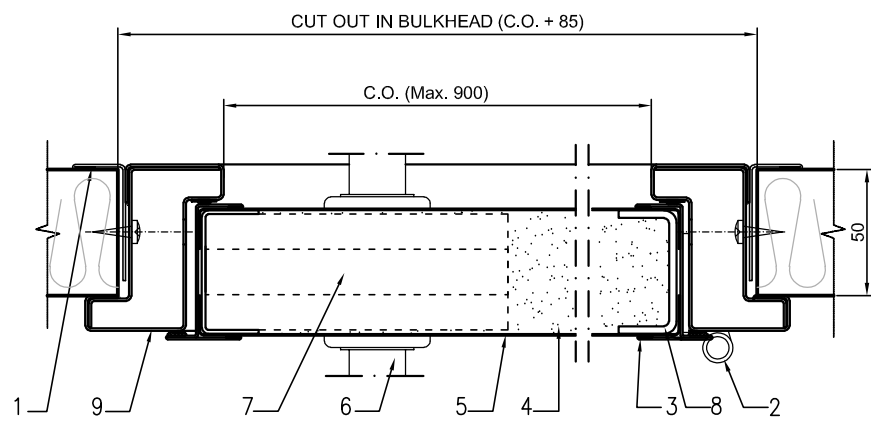
| | | | | |
|------------|--------------------------------|------------------------------|---|--|
| 15 | FRISA TIPO "OMEGA" | TYPE "Ω" SEAL | PERFIL SILICONA ESPONJOSA GRIS OMEGA | RUBBER BAND |
| 14 | FRISA TIPO "P" | TYPE "P" SEAL | PERFIL EPDM "P" | RUBBER BAND |
| 13 | CIERRAPUERTAS (OPCIONAL) | (OPTIONAL) DOOR CLOSER | OPCIONAL (SEGÚN PROYECTO) | OPTIONAL (ACCORDING TO PROJECT) |
| 12 | TRAMPILLA DE ESCAPE (OPCIONAL) | (OPTIONAL) KICK OUT PANEL | ACERO INOXIDABLE BRILLO 2 mm | 2 mm ST. STEEL POLISH PLATE |
| 11 | REJILLA (OPCIONAL) | (OPTIONAL) VENTILATION GRILL | MATERIALES NO COMBUSTIBLES | NON COMBUSTIBLE MATERIALS |
| 10 | PISADERA | SILL COVER | ACERO INOXIDABLE BRILLO 0,8 mm | 0,8 mm ST. STEEL POLISH PLATE |
| 9 | MARCO | FRAME | CHAPA GALVANIZADA PINTADA o AC. INOX. 1,2 mm | 1,2 mm GALVANIZED PAINTED OR ST. STEEL PLATE |
| 8 | BASTIDOR DE HOJA | DOOR LEAF FRAME | CHAPA GALVANIZADA 3 mm LADO BISAGRAS - 1,5 mm | 3 mm HINGED SIDE - 1,5 mm GALVANIZED STEEL PLATE |
| 7 | CERRADURA | LOCK | SEGÚN PROYECTO | AS PER CLIENT REQUIREMENTS |
| 6 | ESCUDOS Y MANILLAS | PLATES AND HANDLES | SEGÚN PROYECTO | AS PER CLIENT REQUIREMENTS |
| 5 | BANDEJAS DECORATIVAS | LININGS | CHAPA GALVANIZADA DE 1,2 mm ESPESOR MÍNIMO | 1,2 mm MINIMUM THICKNESS GALVANIZED PLATE |
| 4 | AISLAMIENTO | INSULATION | LANA DE ROCA DE DENSIDAD 180-70 kg/m ³ | 180-70 kg/m ³ DENSITY ROCK WOOL |
| 3 | CANTONERA | EDGE TRIM | CHAPA 0,8 mm. INOX./LATÓN/GALVANIZADA PINTADA | 0,8 mm PLATE ST. /BRASS/GALVANIZED PAINTED |
| 2 | BISAGRA | HINGE | NAVALIBER ACERO INOXIDABLE | NAVALIBER ST. STEEL |
| 1 | ARILLO | COUNTER FRAME | CHAPA 1,2 mm GALVANIZADA PINTADA / AC. INOX. | 1,2 mm PLATE GALVANISED PAINTED / ST. STEEL |
| MARCA ITEM | DENOMINACIÓN DENOMINATION | MATERIAL MATERIAL | | |



| | | | | |
|----------------------------|---|---|------------------------|---|
| CARACTERÍSTICAS FEATURES | | DENOMINACIÓN DENOMINATION | | <p>Urban living at sea</p> |
| Peso (kg.): Weight: | 38 Kg/m | <p>PLANO GENERAL TIPO "T" "T" TYPE GENERAL DRAWING</p> | | |
| Material: Material: | SEGÚN E. T. y L. M. AS TECHNICAL SPEC. & MATERIAL LIST | <p>PUERTA B-15 ACÚSTICA NAVALIBER "3NB-15"</p> | | <p>PLANO Nº DRAWING No 3NB15.PT04.04.T</p> |
| Tratamiento: Treatment: | SEGÚN E. T. y L. M. AS TECHNICAL SPEC. & MATERIAL LIST | <p>NAVALIBER "3NB-15" ACOUSTIC B-15 CLASSIFIED DOOR</p> | | |
| Acabado: Finishing: | SEGÚN E. T. y L. M. AS TECHNICAL SPEC. & MATERIAL LIST | Dibujado Drawn | Comprobado Verified | Aprobado Approved |
| | File | NAVALIBER.3NB15.PT04.04.T.dwg | J. M. G. | A. H. R. |
| | | | G. G. M. | |
| | | Dibujado Drawn date | 25/03/10 | Escala Scale |
| | | | | 1:15 |
| | | Revisión: Revision: | C | Fecha: Date: |
| | | | | 22/02/17 |
| | | | | HOJA 1 DE 1 SHEET OUT OF 1 |

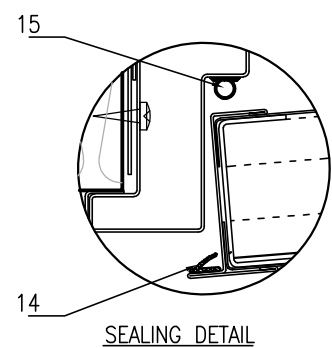
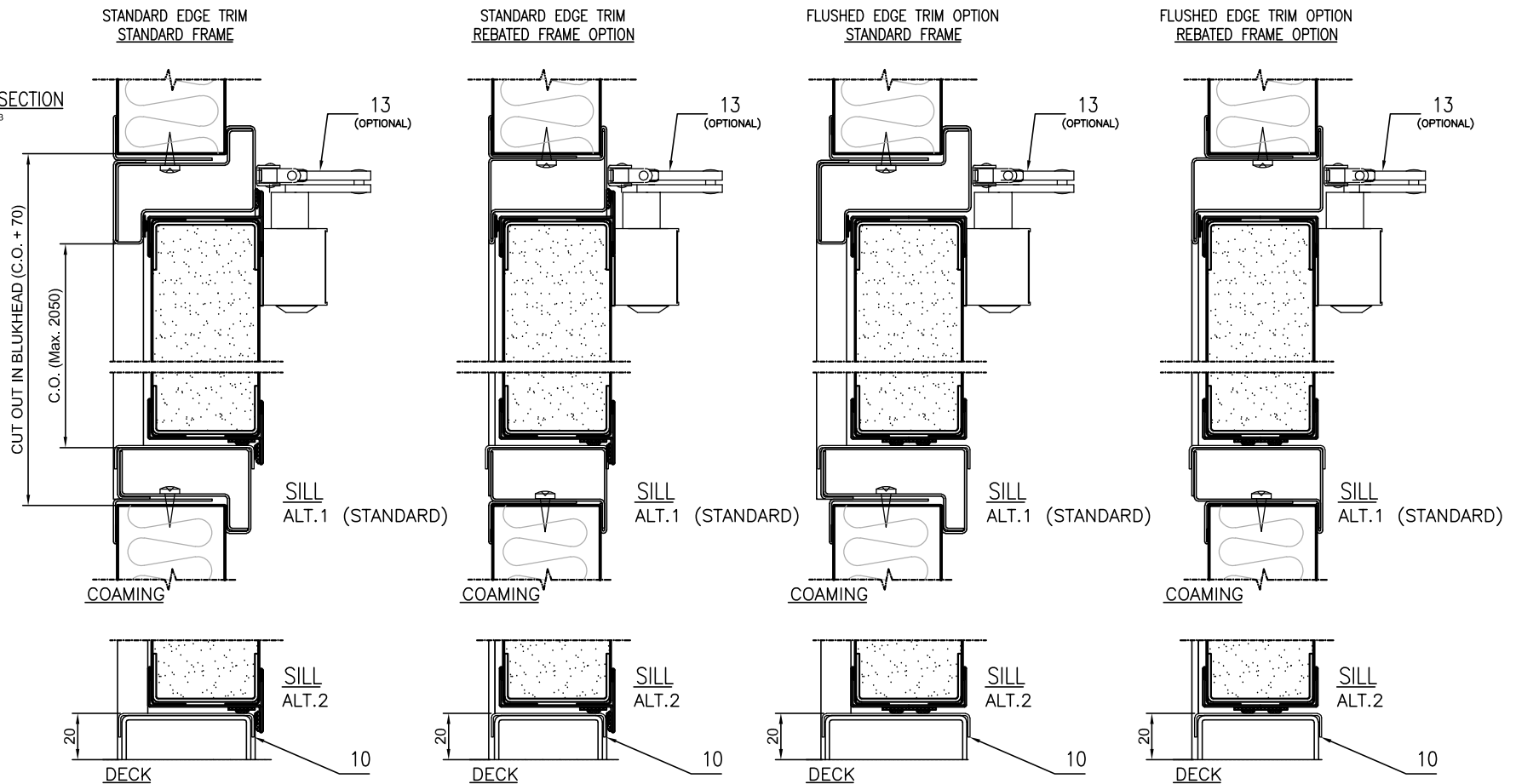


A-A SECTION
SCALE 1:2



SEE FRAME AND EDGE TRIM OPTIONS
IN B-B SECTION

B-B SECTION
SCALE 1:3



| | | | | |
|------------|--------------------------------|------------------------------|---|--|
| 15 | FRISA TIPO "OMEGA" | TYPE "Ω" SEAL | PERFIL SILICONA ESPONJOSA GRIS OMEGA | RUBBER BAND |
| 14 | FRISA TIPO "P" | TYPE "P" SEAL | PERFIL EPDM "P" | RUBBER BAND |
| 13 | CIERRAPUERTAS (OPCIONAL) | (OPTIONAL) DOOR CLOSER | OPCIONAL (SEGÚN PROYECTO) | OPTIONAL (ACCORDING TO PROJECT) |
| 12 | TRAMPILLA DE ESCAPE (OPCIONAL) | (OPTIONAL) KICK OUT PANEL | ACERO INOXIDABLE BRILLO 2 mm | 2 mm ST. STEEL POLISH PLATE |
| 11 | REJILLA (OPCIONAL) | (OPTIONAL) VENTILATION GRILL | MATERIALES NO COMBUSTIBLES | NON COMBUSTIBLE MATERIALS |
| 10 | PISADERA | SILL COVER | ACERO INOXIDABLE BRILLO 0,8 mm | 0,8 mm ST. STEEL POLISH PLATE |
| 9 | MARCO | FRAME | CHAPA GALVANIZADA PINTADA o AC. INOX. 1,2 mm | 1,2 mm GALVANIZED PAINTED OR ST. STEEL PLATE |
| 8 | BASTIDOR DE HOJA | DOOR LEAF FRAME | CHAPA GALVANIZADA 3 mm LADO BISAGRAS - 1,5 mm | 3 mm HINGED SIDE - 1,5 mm GALVANIZED STEEL PLATE |
| 7 | CERRADURA | LOCK | SEGÚN PROYECTO | AS PER CLIENT REQUIREMENTS |
| 6 | ESCUDOS Y MANILLAS | PLATES AND HANDLES | SEGÚN PROYECTO | AS PER CLIENT REQUIREMENTS |
| 5 | BANDEJAS DECORATIVAS | LININGS | CHAPA GALVANIZADA DE 1,2 mm ESPESOR MÍNIMO | 1,2 mm MINIMUM THICKNESS GALVANIZED PLATE |
| 4 | AISLAMIENTO | INSULATION | LANA DE ROCA DE DENSIDAD 180-70 kg/m³ | 180-70 kg/m³ DENSITY ROCK WOOL |
| 3 | CANTONERA | EDGE TRIM | CHAPA 0,8 mm. INOX./LATÓN/GALVANIZADA PINTADA | 0,8 mm PLATE ST. /BRASS/GALVANIZED PAINTED |
| 2 | BISAGRA | HINGE | NAVALIBER ACERO INOXIDABLE | NAVALIBER ST. STEEL |
| 1 | ARILLO | COUNTER FRAME | CHAPA 1,2 mm GALVANIZADA PINTADA / AC. INOX. | 1,2 mm PLATE GALVANISED PAINTED / ST. STEEL |
| MARCA ITEM | DENOMINACIÓN DENOMINATION | MATERIAL MATERIAL | | |



| | | | | |
|--|--|--|--|---|
| CARACTERÍSTICAS FEATURES | | DENOMINACIÓN DENOMINATION | | <p>Urban living at sea</p> |
| Peso (kg.): Weight: 38 Kg/m | | <p>PLANO GENERAL TIPO "Z"</p> <p>"Z" TYPE GENERAL DRAWING</p> | | |
| Material: SEGÚN E. T. y L. M. AS TECHNICAL SPEC. & MATERIAL LIST | | GENERAL GENERAL | | <p>PLANO Nº DRAWING No 3NB15.PT04.04.Z</p> |
| Tratamiento: SEGÚN E. T. y L. M. AS TECHNICAL SPEC. & MATERIAL LIST | | <p>PUERTA B-15 ACÚSTICA</p> <p>NAVALIBER "3NB-15"</p> <p>NAVALIBER "3NB-15" ACOUSTIC B-15 CLASSIFIED DOOR</p> | | |
| Acabado: SEGÚN E. T. y L. M. AS TECHNICAL SPEC. & MATERIAL LIST | | <p>Revisión: C Fecha: 22/02/17</p> <p>Date:</p> | | <p>HOJA 1 DE 1 SHEET OUT OF 1</p> |
| <p>Fichero File: NAVALIBER.3NB15.PT04.04.Z.dwg</p> | | <p>Dibujado Drawn: J. M. G.</p> <p>Comprobado Verified: A. H. R.</p> <p>Aprobado Approved: G. G. M.</p> <p>Dibujado Drawn date: 25/03/10</p> <p>Escala Scale: 1:15</p> | | |